

THE WHITFORD QUARTERLY



Volume 77, Issue 1

January - March 2026

FEATURE JOB PORTVILLE SANITARY SEWER REHABILITATION

By: RJ EMPSON

In June of 2025, LCW was awarded the Village of Portville Sanitary Sewer Rehabilitation Project, a contract valued at \$8,183,564. In the first quarter of 2026, we began making steady progress as the long winter season moved behind us. This project will focus on upgrading aging piping and collection devices to improve system reliability.

Work began with targeted spot repairs to address deficient pipe sections and prepare for the cured-in-place pipe (CIPP) lining crew. Following this, LCW will advance initial phases of sewer replacement, lining, and manhole rehabilitation in key areas.

While maintaining continuous sewer service, the scope includes over 15,000 linear feet of sewer main replacement and approximately 7,000 linear feet of CIPP lining, along with manhole rehabilitations and replacements. We will also be installing precast structures with depths in excess of 20 feet to add protective measures to the existing wastewater treatment plant. Did I mention that we are doing this all between resident's homes, garages, pools, sheds, and driveways?

We look forward to continuing progress in the coming months while recognizing the efforts of our Superintendent, Jim Zink, and his crew. Keep up the good work!



In This Issue:

<i>Feature Job</i>	1
<i>Equipment Company</i>	2
<i>Material Company</i>	2
<i>President's Corner</i>	3
<i>Georgia News</i>	3
<i>Railroad Update</i>	4
<i>Safety Update</i>	4
<i>Chuck's Chuckle</i>	4



EQUIPMENT COMPANY – JUSTIN SNYDER

Glad to see spring is on its way, although winter as of late has put up a good fight. Activity this quarter for the L.C. Whitford Equipment Company has been coming to life with sales, service, and parts on the rise.

The sales team has been busy moving inventory, Joe sold a 2019 Timberpro 830D forwarder with a Rotobec 4552HD grapple to longtime customer A.M. Logging from Millheim, PA. A.M. Logging also moved into a new Morbark 223 Flail on tracks to complement their existing Morbark chip harvesters to keep pace with their clean chip markets. We also sold a new Timberpro 830D forwarder (aka Black Beauty) with a Huldins 360S grapple to Shalata's Land Clearing out of Meshoppen, PA. Garret sold one of our rental units, a Morbark 2230 drum chipper on tracks, to Jimmy's Grading from Franklin, NJ. Lastly, local logger Ron Cornelius bought a Rotobec 4642 Log Gapple for his loader to keep timber moving at Cornelius Trucking.

Our service crew has done a fantastic job getting trade-ins ready for sale promptly, and making sure new machines are inspected and properly outfitted upon arrival. They also recently completed an in-house service for the town of West Seneca. The town's Morbark 6600 Wood Hog needed some TLC, and our guys got er done, performing a fuel system clean out, fluid and filter changes, and in-feed chain adjustment.

This is always a time of year I look forward to, as the daylight increases, I enjoy seeing nature spring back into action. We are set up to have a solid year and I am confident that our team has the stuff to bring more deals to light and continue to support our customers through all the seasons.



Timberpro 830D Trade



Morbark 223 Flail

MATERIALS COMPANY – JESSICA LAFLEUR HUNT

The Materials Company started back this year on March 2nd with a company twenty-two members strong! We're running a little leaner this year than we have in the past, but are confident with the new practices being implemented on top of the hard working crew we have, this year will be just as successful (if not more) as the years prior. On that note, we would like to congratulate Alex Ordiway on his promotion to Quality Technician Leader. Alex has been a critical player for the Materials Company since he began in 2024, and his drive to continuously hone his abilities, be a team player, and independently expand his precasting knowledge has made him the perfect candidate for this new role. We also want to extend a big welcome to Shawn Harvey who graciously decided to join the Materials Company as our new Materials Company Maintenance Technician. Shawn has been training diligently on our operations, processes, and batch plant operations while simultaneously still acting as LCW's main maintenance individual. We are very excited to have Alex and Shawn in their new roles. Congratulations, guys!

To recap our first 18 days back, our crew finished pouring the 500-piece tube & key barrier goal, poured 8 beams, all while working through some equipment challenges. We are thankful for our experienced and versatile crew for being able to adjust, react, and manage quickly to the multiple challenges we have faced. From the business side, we are now up to nineteen jobs this year totaling 115 beams and multiple precast units. We also have three pending jobs in addition to multiple jobs coming up for bid in the weeks ahead.

Outside of daily business, the Materials Company has been even busier with out-of-the-norm activities. To name a few... We visited the Precast Show in Kansas City and had a great experience. We were able to meet with numerous vendors, customers, and even ran into some of our competitors. In addition, all the NY Precast Producers met with Ron Thorton (PCANY's president & one of the original founders of the Precast Show) to discuss NY related laws and standards changing within the state of NY. This show was a major success and we look forward to attending again in the future! On another note, we delivered 9 of 15 beams to Mercer County, PA this past month and although there were some challenges, the delivery was a success and we have our outstanding trucking team to thank for that! From the estimating side, we worked diligently on a NYSDOT bridge project that went up for bid on 3/12. This job was one-of-a-kind and a first for NYS beam producers. Fortunately, we were low-bidder and awarded the job. To say we are excited would be an understatement and we look forward to sharing the details of this bridge in the months ahead.



*Randy Geffers, Joe Irvin, & Jim Green
fabricating the Steerables!*

Lastly, with projects getting larger and beams getting lengthier we have determined more steerable trailers are not only essential but needed. Luckily for us and LCW as a whole, we have a master fabricator that can make our needs come to life. Thanks to Jim Green's unparalleled skills, extensive knowledge, and diverse manufacturing capabilities, we were able to start producing two new steerable trailers this month. These steerable trailers are more than just another piece of equipment. They are a means to keep us competitive amongst other precasters, they give us the ability to ship more efficiently and allow us as a company the flexibility we need to stay on top of the market and continuously outperform our competitors. Thank you, Jim Green, for not only producing these trailers but taking the lead on this project and making it appear a seamless endeavor!

PRESIDENTS CORNER – BRAD WHITFORD

The New York safety seminar was held at the Wellsville Country Club on March 7. We were all happy that Dad (Chan) made a guest appearance as had been requested. It was a setup! We were presented with this amazing grandfather clock to commemorate LCW’s 110th year. The clock was built from scratch by company employees, headed up by Joe Wood. It will reside on the first floor of the main office building. Please stop in and check it out. It is truly a thing of beauty! Many thanks to all involved in this incredible tribute.

I would like to acknowledge the upcoming retirement of three 40-year+ employees: Kathy Winans, Sharon Padden and Sue Henry. Most of you have known them for years (decades), and I am certain that I do not need to tell you about their contributions to this company! I can’t say enough about my adoration for these three ladies and my heartfelt appreciation for their many years of service. Thank you.

*Regards,
Brad*



GEORGIA NEWS – BY KARL YOUNG

Project #23129 – Bridge Rehabs at 3 locations on I-95

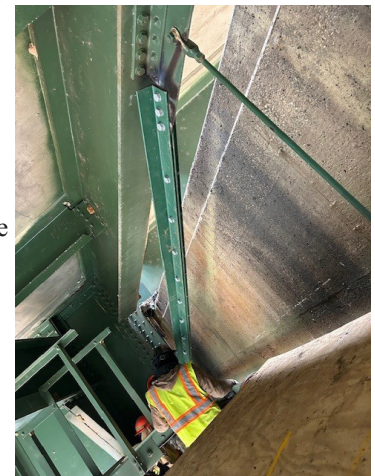
By the time this newsletter is printed we should be done with the polymer overlays on all three bridges. We are working to complete the joint sealing on two of the bridges which should be finished in the next few weeks. The permanent roadway striping will also be completed soon. All work on this large bridge rehabilitation project near Savannah should be complete by the end of April.



Project #23129 - Bridge Paint

Project #25055 – Bridge Rehab on US 280 over Chattahoochee River

Most work is complete. We will be concluding the remaining work on structural steel repairs and the steel finger joint deck drain system over the next few weeks. The steel will then be painted and all work completed by the end of May.



**Project #25055
Structural Steel Replacement**

Project #25078 – Bridge Repairs on I-285 over Mt. Gilead Road

LCW was requested to perform emergency bridge repairs for GDOT on I-285 in the City of Atlanta. Multiple areas of the concrete deck and edge beams had failed due to shoddy construction from a previous contractor. We are now complete with all work replacing the concrete deck, edge beams, and joint seals.

Project #26014 – ITB Sound Wall Repairs near Atlanta

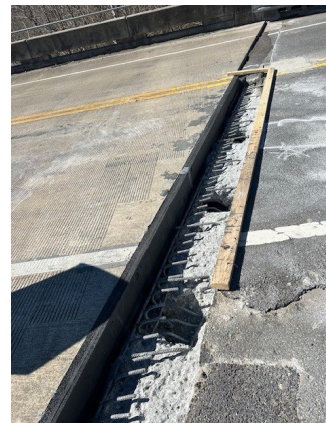
We picked up another sound wall repair project around Atlanta. Inventory has been taken and materials have been ordered. We will begin work on clearing and sound wall removals very shortly. The new posts, panels, angle iron, and trim will be completed by July 3rd.

Project #26015 – ITB Bridge Slope Paving Repair

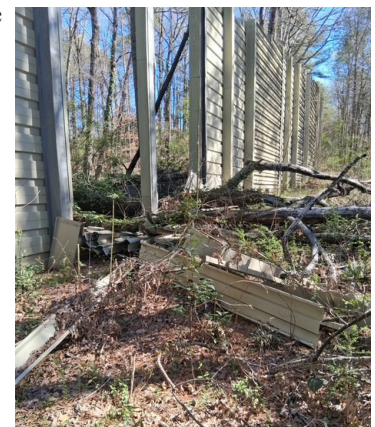
LCW began construction on March 23rd filling large voids with flowable fill and replacing concrete slope paving under two bridges on I-75 south of Cartersville, GA. Work should be complete by the end of April.

Project #26017 – I-285 Signs and Sign Structures

LCW was selected as the subcontractor by C.W. Matthews & E.R. Snell to replace the signs and sign structures on this \$155 Million I-285 GDOT paving project. We will first remove all existing overhead structures and place existing signage on temporary structures located on the right shoulder of the roadway. Phase one will be median foundation work; phase two will be foundation work on the right shoulder and phase three will be installing the new structures and signs. In total, there are twenty-three (23) new overhead sign structures to construct. Work shall commence after Atlanta hosts the FIFA World Cup this summer and completion will likely be in the fall of 2027.



Project #25082 - Header Repair



**Project #26014
Before Sound Wall Repairs**



Project #25078 - Completed Edge Beam



Project #26015- Slope Paving Repair

The Whitford Co., Inc

164 North Main Street
PO Box 663
Wellsville, NY 14895

Phone: 585-593-3601
Fax: 585-593-1876
E-mail: lcwco@lcwhitford.com

Building Since 1916

Visit us on the web:
lcwhitford.com

FINAL THOUGHT

“Far and away the best prize that life offers is the chance to work hard at work worth doing.”
- Theodore Roosevelt

SAFETY UPDATE THIS
QUARTER
71,818
MAN HOURS WITH
0
LOST TIME ACCIDENT
KEEP UP THE GOOD
WORK!!!!

RECENT CONTRACTS
AWARDED

Georgia

- GADOT – Bridge Repair I-75R Altona
- GADOT – I-285/SR 404 Pavement Reconstruction
- GADOT – Soundwall Repairs District 7

New York

- NYS Parks & Rec. - Allegany County Pedestrian Bridges

Pennsylvania

- HP Construction – ECMS 110161 – Lake Road waterproofing
- HP Construction – ECMS 118051 - SR 3027 Bradford County
- PADOT - ECMS 84099 SR 49 over Genesee River, Bingham Township

Virginia

- Norfolk Southern - Emergency job Roanoke, VA
- Dominion – Merriefield Substation, Inter Connection Substation, Brickyard Substation, Gemini Substation, Pleasant Substation, Harper Substation

RAILROAD UPDATE – MATT INGALLS

The 2026 construction season is shaping up to be a strong one for the LCW Railroad Division. We currently have four ongoing projects and a healthy backlog of work to keep us on our toes for the remainder of the year. New projects seem to be coming out for bid weekly. With that in mind, we plan to keep our schedule full and complete as many projects as possible in 2026.

If I remember correctly, the most projects the Railroad Division has completed in a single year is 28. Let’s aim for 30 in 2026—who doesn’t like a challenge?



Flange Angle Replacement, Spartanburg SC



W & LE Project Rayland, OH

SAFETY UPDATE – STEVE AUSTIN

During my first quarter as Safety Director at L.C. Whitford Co., I’ve had the opportunity to visit several project sites, meet many of our crews, and begin reviewing and strengthening our safety programs. What stands out most is the professionalism and commitment our employees bring to the job every day. Over the past few months our safety team has focused on updating site-specific safety plans, reinforcing jobsite hazard awareness, and ensuring our teams have the tools and information needed to work safely. Safety is a shared responsibility, and I appreciate the cooperation and feedback from our field personnel as we continue building a strong culture where everyone looks out for one another and goes home safe at the end of the day.

CHUCK’S CHUCKLE

A Short Love Story

A man and a woman who had never met before and were both married to other people, found themselves assigned to the same sleeping room on a trans-continental train. Though initially embarrassed and a bit uneasy over sharing a room, they were both very tired and fell asleep quickly, he in the upper berth and she in the lower.

At 1:00 am, the man leaned down and gently woke the woman to say, “Ma’am, I am sorry to bother you, but would you be willing to reach into the closet to get me a second blanket?”

“I am cold.” “I have a better idea,” she replied, “Just for tonight let’s pretend we are married.”

“Wow! That is a great idea!” he exclaimed.

“Good,” she replied “Get your own fricking blanket.”

After a moment of silence, he farted.