

THE WHITFORD QUARTERLY



Volume 66, Issue 1

January-March 2023

FEATURE JOB

FERRIS ROAD SOLAR FARM

By: JUSTIN FILLHART

The L.C. Whitford Co., Inc.'s endeavor continues to go strong in Upstate New York. Jack DeAgazio and crew have been working nonstop for nearly two years in the region. The quality of work provided has led our customers to continually turn to us to complete their projects, as well as fix issues that have arisen on projects not originally installed by us.

Most recently, Jack and his crew have moved on to 409 Ferris Road in December. Fosler B&W requested assistance on a difficult project to install the remaining pile for a 34 acre, 6.8 MW site. Upon arrival, the crew performed a complete survey of all of the pile that were installed previously, and a full assessment of the site in general with a detailed inventory. Jack and his crew then formulated an action plan with the site representatives to tackle the job as efficiently as possible with the conditions that were dealt to us by Mother Nature.

The crews were tasked with snow removal, removal of pile that were installed by others that were out of tolerances, correcting alignment of predrilled holes, installation/reinstallation of pile, and pouring concrete around the pile in order to secure them. The Q/C and layout crew identified roughly 700 pile that needed to be removed, new layout, and then reinstalled. There were approximately another 700 pile that needed new holes drilled and then pile installed for the first time, correctly. After completion of the pile in a section, the Q/C crew would then make a second trip through for final verification and documentation to compile a complete set of closeout documentation to provide to our customer at the end of the project.

Another subcontractor would then come behind our crews to install the racking and glass system on the pile. After all racking and glass is installed, an electrical subcontractor will then follow suit and complete the electrical portion of the project so that the system is ready to be tied into the grid. As I type this note, Jack and his crew have successfully finished the installation and remediation of all pile on the project in roughly four months. The racking and glass subcontractor has completed 50% of their work in three weeks and have commented "they have never installed racking or glass as

fast, on pile that was so perfect". A true testament to the quality of work our crews install.

In closing, our customer on this project has asked us to take on the remedial site work on the location, and have asked us if we would be able to take on four more locations that they have waiting for our crews to complete or remediate. I would like to thank all of our superintendents that have assisted on the project as well as our dedicated employees for continually producing high quality work. It is directly because of their efforts that we are able to continue with this new line of work in the renewable energy market, satisfying customers, and keeping the reputation of The L.C. Whitford Co., Inc. in such high regards in the industry.

Respectfully,
Justin W. Fillhart
Operations Manager – The L.C. Whitford Co., Inc.

Ferris Road Project:



In This Issue:

<i>Feature Job</i>	1
<i>Equipment Company</i>	2
<i>Material Company</i>	2
<i>President's Corner</i>	2
<i>Georgia News</i>	3
<i>Railroad Update</i>	4
<i>Safety Update</i>	4
<i>Chuck's Chuckle</i>	4

EQUIPMENT COMPANY – BRUCE STRAIGHT

The 1st Quarter has been a little bit slow. The Parts Department has had steady sales and the Service Department has had several repairs at customer job sites. We also just completed a large job in our shop rebuilding the mill in a customer's Morbark 4600XL Horizontal Grinder and we mounted a QuadCo 5660 Processor Head on a used TimberPro that was sold to a new customer. We have also sold a new TimberPro TL735D Feller Buncher, two used QuadCo Disc Saws and a new Morbark 23X Whole Tree Chipper.

We are finally starting to get some new equipment inventory in stock. We have a new Morbark 6600 Track Wood Hog with a CAT C32, 1,200 Horse Power engine arriving any day. We also have a new Morbark 3400XT Horizontal Grinder coming soon. We also have both a new and a used Morbark 6400XT Horizontal Grinders in stock. We also have new TimberPro Forwarders and another new Feller Buncher here and ready to go. Between our current inventory and the equipment that is scheduled to start arriving we are in good shape for the coming months.



L.C. Whitford's Current Inventory



Morbark 6400XT Wood Hog



Morbark 23X Chiparvestor



Morbark 6600 Track Wood Hog

MATERIALS COMPANY – DAN WHITFORD

The LC Whitford Materials Company is in full swing. We currently have more work on the books than we have had in a few years. As we strive for better communication and efficiencies, we are hoping to have a banner year. The L.C. Whitford Materials Company is well known for their commitment to customer needs, communication, and most importantly quality. There is no question in the industry that our products are second to none. That being said, I'm happy to report the addition of an old friend Frank Burdick. Frank has been in the precast quality control sector for over a decade and has a lot to offer. We're currently upgrading various equipment and tools for the continued focus on efficiency. At this time we have over 200 prestressed girders to cast as well as several specialty projects.

I also wanted to give a nod for years of dedication from:

Tim Mitchell	37
Chad D'Arcy	31
Andrew Havens	27
Randy Geffers	22
Clayton Layfield	23
Tawney Mitchell	19
Josh Burdick	18

PRESIDENTS CORNER – BRAD WHITFORD

I would like to start by congratulating my brother, Daniel Whitford on being promoted to Vice President of LCW in January of this year!!

Our 2023 has started! Talk about a mild winter. The ice was completely gone from Cuba Lake by February 28th. The lake was "built" in 1858 and I would be shocked if that has ever been the case before. Unfortunately, we didn't have the same amount of winter work as last year to really capitalize on the good weather. That said and no doubt, the milder than usual temperatures still helped us in many areas. Our work on hand is down a tad (7%) compared to last year, but we have had a busy bid schedule with several more bids due in the near future.

The Materials Company is on track to have a bigger than average year with over 200 beams currently on the schedule and the Equipment Company has more equipment on order than usual due to longer build times. In early winter, the GA Division knocked a significant emergency project out of the park. You can read about it later in the newsletter.

I feel that things are looking good for 2023.

*Regards,
Brad*

GEORGIA NEWS – KARL YOUNG

Project #22072 – I-75 Emergency Bridge Repair

We were proud to be selected by GDOT as one of three contractors in the State to bid on this emergency repair project. We were also obviously fortunate enough to be selected as the contractor to perform the work. The bridge repaired was Pinehurst-Hawkinsville Road over I-75, located approximately 117 miles north of the Florida border near the small town of Pinehurst, GA. The bridge had been struck by a dump truck while running full speed on I-75 northbound with a raised bed; unfortunately, the driver did not survive the accident. Two steel girders were damaged beyond repair. The weakened structural integrity of the bridge caused GDOT to close eastbound traffic on the two lane bridge over I-75.

After acquiring all necessary approved materials, we began construction on January 9th, 2023. Demolition consisted of removing the concrete railing, concrete overhang, bridge deck, concrete edge beam, steel girders, diaphragms, bearings and anchor bolts. The beam replacements were a little more complicated than what we typically perform. The beams were spliced in a simple span over the left-hand lane of I-75 north. This meant cutting the old beams loose and weld splicing the new beams in place while supported by a crane. During this nighttime operation I-75 north was closed and detoured around the bridge. Once the new beams, bearings and anchor bolts were in place we constructed the concrete bridge deck, overhang, railing and brush curb. In addition, work included edge beam replacement, sealed bridge joints, overhead sign installation, striping, and painting.

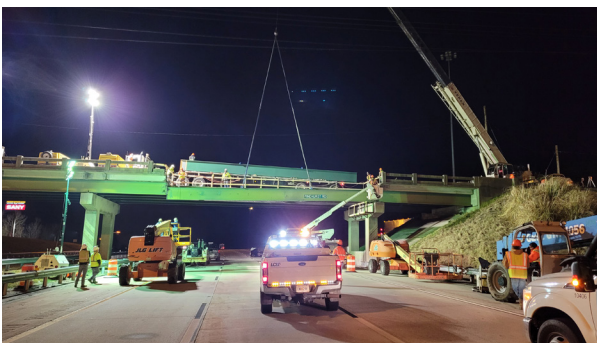
The L. C. Whitford Company, Inc. was tasked with performing all rehabilitation work within the thirty-day contract completion date. However, in order to complete the most critical tasks the bridge was only allowed to be completely closed to traffic for a total of ten days. And during this ten-day period three days were essentially lost to concrete curing of the bridge deck. Per contract stipulations this deck cure time was mandatory before the overhang could be poured. Of course, mother nature also threw in a few days of harsh rain and thunderstorms to make things more trying. Ultimately, our detailed planning and scheduling in conjunction with our dedicated, hardworking crews delivered a high-quality project in the strict time constraints provided. GDOT was happy and impressed. Congratulations Joe Howland and crew on a job very well done!



Overhang and Deck Removal Complete



New Steel Beam



Setting The New Beam



Ready For Pour



Construct Railing



Finished Product

The Whitford Co., Inc

164 North Main Street
PO Box 663
Wellsville, NY 14895

Phone: 585-593-3601
Fax: 585-593-1876
E-mail: lcwco@lcwhitford.com

Building Since 1916

Visit us on the web:
lcwhitford.com

FINAL THOUGHT

“If your actions inspire others to dream more, learn more, do more and become more, you are a leader.”
- John Quincy Adams

RECENT CONTRACTS
AWARDED

Georgia

• GADOT – Snapfinger Road – Bridge Rehabilitation

Indiana

• Norfolk Southern – Span Replacement, Millersburg, IN

New Jersey

• Conrail – Span Replacement Port Reading, NJ

New York

- Village of Riverside – Pump Station Improvements
- Norfolk Southern – Canaseraga Compressor
- NYS DOT-D264975 – 54A Drainage Improvements
- Village of Wellsville – Concrete Repairs at Water Plant
- Norfolk Southern – Span Replacement, Swain, NY
- NYS DOT – D265015 – Standby Highway Repair, Various Counties

Ohio

- Wheeling & Lake Erie RR – Bridge 91.36 Mingo Junction, OH
- Wheeling & Lake Erie RR – Bridge 91.14 Mingo Junction, OH

Pennsylvania

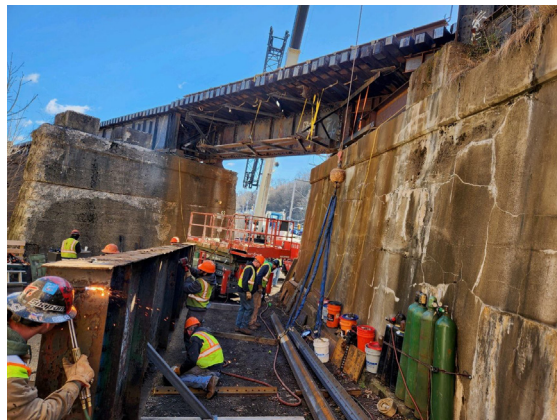
- PADOT – ECMS 97673 – Bridge Rehab. Gaines, PA
- Wheeling & Lake Erie RR – Pittsburgh, PA 47.49
- Norfolk Southern – Northeast Pa Bridge Repairs

Virginia

- PS Bruckel Sub – Latex Concrete Overlay John H. Kerry Dam, Mecklenburg County
- Dominion – Lockridge, Ruritan Station, Bailey’s Crossroads Fall Church, Wakman, White Oak, Lincoln Park, Techpark, La Crosse, Hopewell, Danville, Iron Bridge

RAILROAD UPDATE – MATT INGALLS

The railroad division here at LCW has hit the ground running in 2023 with no expectations of slowing down. Just in the first 3 months of the year we have started and completed 8 projects in 4 different states. We have all hands on deck for a 6-week outage in Norfolk, VA kicking off April 5th to replace two hinge pins on the Norfolk Southern coal loader at the Lamberts Point docks as well as rack replacement on the coal dumper. After completion of that project, we will be splitting the crew back up to tackle the remaining projects that we have lined up for 2023. Our bidding schedule is as busy as ever. We look forward to continuing to improve and succeed throughout the year. “If everyone is moving forward together, then success takes care of itself.” – Henry Ford



Flange Angle Replacement in Pittsburgh, PA



Span Replacement in Richmondville, NY

SAFETY UPDATE – COLTON SAULTER

As work is starting to ramp up for the year, situational awareness is a good thing to always keep in mind. A lack of situational awareness is a common factor in many incidents. Often, there is so much “going on” in a work environment that one may become lost in their own thoughts, that they fail to spot hazards that may pose a serious threat to your health and safety. Here are some tips to keep in mind while performing any task:

- Engage your mind before your hands. Look at the task in front of you.
- Inspect your work area and locate the hazards that are present to you and your workmates.
- Assess the effects that the hazards will have upon you, the people you work with, equipment, and the environment around you.
- Ensure that you have the proper tools, training, and PPE to perform the task safely.
- If you feel that a task is unsafe stop working. Inform your supervisor and discuss actions that are needed to make the situation safe.

If you have any questions or concerns, don’t hesitate to call. Thank you and let’s have a safe and productive year.

SAFETY UPDATE THIS QUARTER
39,909
MAN HOURS WITH
0
LOST TIME ACCIDENT
KEEP UP THE GOOD WORK!!!!

CHUCK’S CHUCKLE

RETIRED LIFE

Now that I am old and retired I am a lot more forgetful. Vika asked me to get her a bowl of ice cream with whipped cream. “You may want to write this down” she said. I replied “No, I can remember, you want a bowl of ice cream”. She stated “I want a bowl of ice cream with whipped cream and a cherry on top, write it down.” I replied “No, I got this, a bowl of ice cream with whipped cream and a cherry on top.” I went to the kitchen and thirty minutes later I brought her a plate of eggs and bacon. Vika stares at the plate for a moment and then looks at me and asks, “Where’s the toast?”